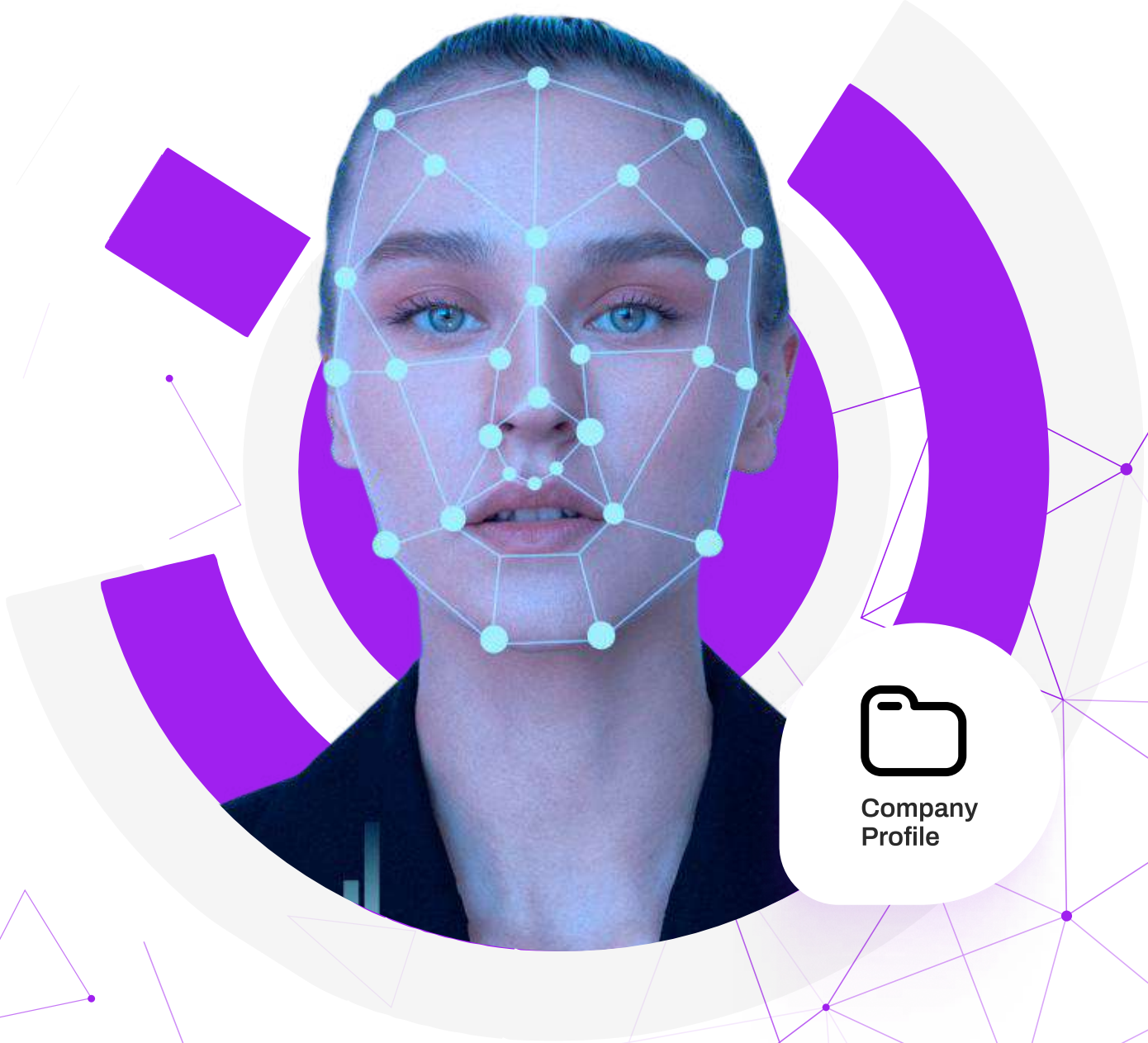


SMART ATTENDANCE

Face Recognition



Company
Profile



About Us

Smart attendance company



Managing the presence and absence of the company's employees with facial recognition through artificial intelligence

We are a company committed to changing the way employees manage their attendance. Our AI-based facial recognition system provides an integrated, efficient and reliable solution for tracking employee working hours, saving time and money and increasing productivity. Also, this system can be integrated with the ERP system and connected within the system.



Company
Profile

Get Familiar With Face Attendance

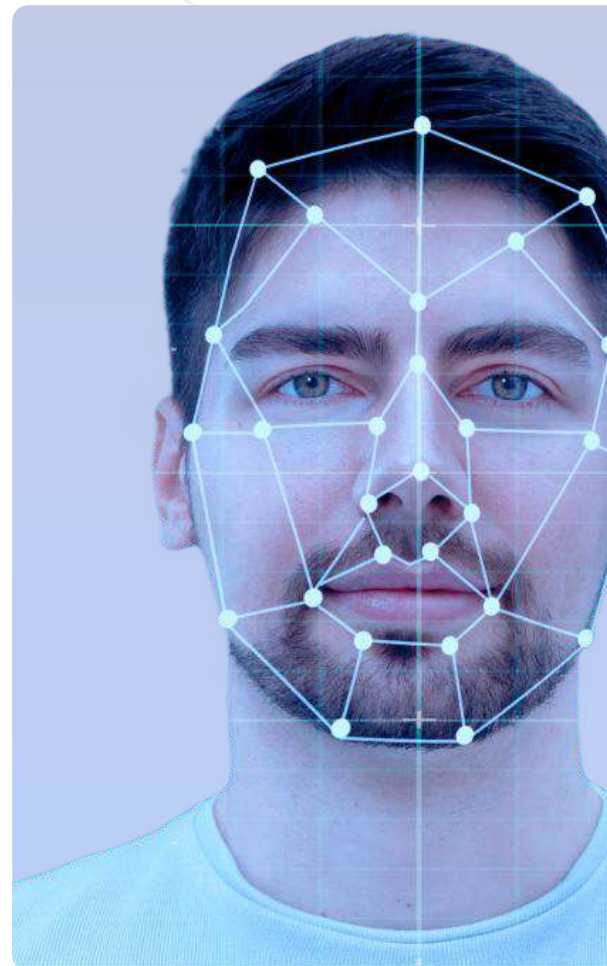
Face Attendance

Know about face attendance

You might be wondering why we should use this program at all.

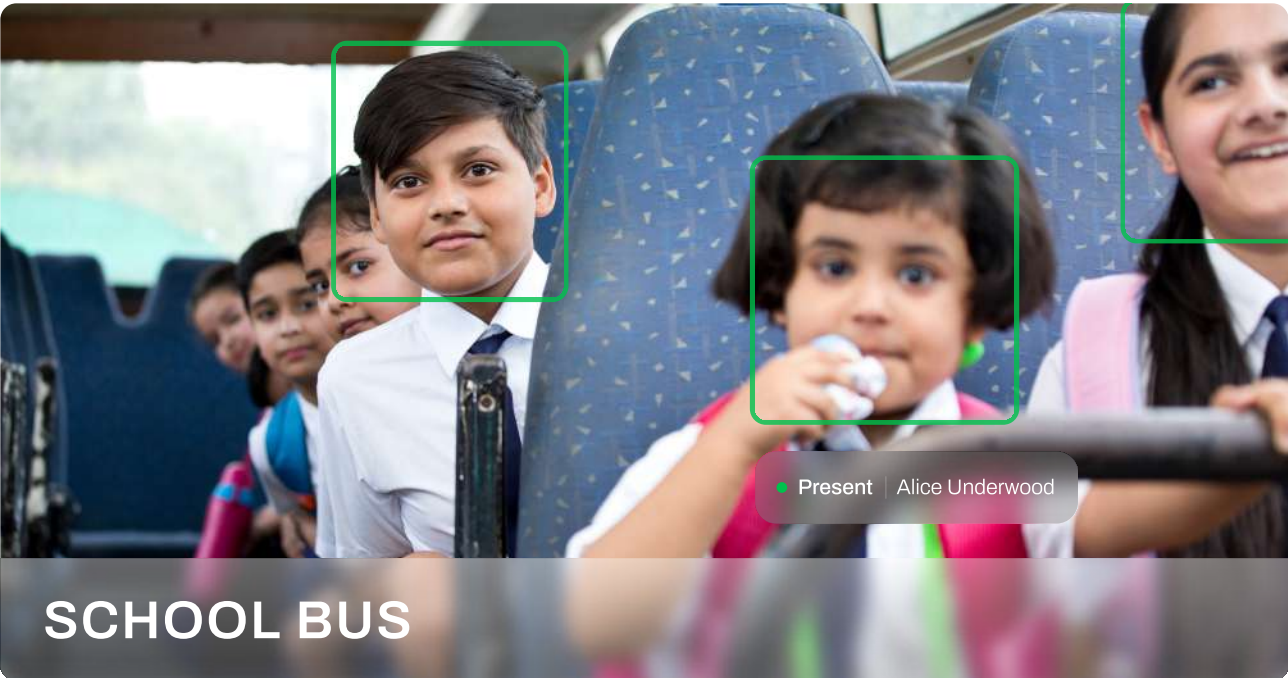
What benefits Is it affordable?

In the following, we will explain the advantages and features of the attendance and absence system using artificial intelligence for different businesses and you will get all the answers to your questions.



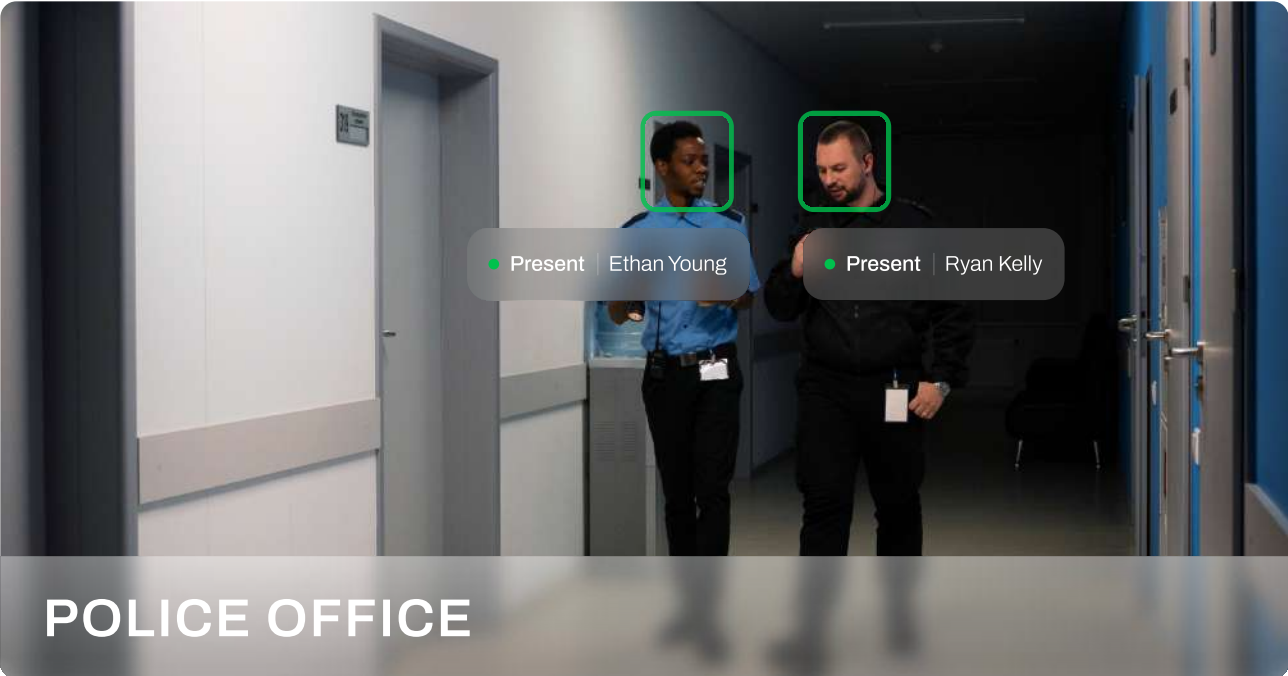
Face Attendance

Examples of use cases



Face Attendance

Examples of use cases



Face Attendance

Dashboard preview

The dashboard provides a comprehensive overview of attendance. It features a navigation sidebar on the left with options for Dashboard, Attendance, People, Settings, Help, and Logout. The main content area is titled 'Dashboard' and includes a sub-header 'See and manage overall people status'. At the top, there are filters for 'Today', 'Week', 'Month', and a 'Calendar' dropdown. Two summary cards show '230 Overall Total people' and '218 Present people'. The 'People Analysis' section contains a line chart comparing 'Present People' (purple) and 'Absent People' (green) over a week, with a callout for Thursday showing 75 people. The 'People List' section at the bottom displays a table with columns for People, Check-In, Last Check-Out, Status, Designation, Total Work, and Snapshot.

IDOM Idea of mind

Dashboard

See and manage overall people status

Today Week Month Calendar

230 Overall
Total people

218
Present people

People Analysis

Present People Absent People

Data updates every 1 hour

Thursday
75 People

People	Check-In	Last Check-Out	Status	Designation	Total Work	Snapshot
Lucas Campbell FG5568	08:16	Still Working	Present	Employee	08:00	

Benefits For Businesses

Know about face attendance



**Simplified
Operations**



**Increased
Efficiency**



**Cost-
Effectiveness**

Simplified Operations: The system eliminates complicated hardware installations, works across various industries, and offers a user-friendly plug-and-play setup with minimal initial investment

Increased Efficiency: Automated attendance tracking with fast processing times frees up managers' time and reduces administrative burdens. Scalable architecture allows the system to grow alongside your business. Integration with HR and payroll systems streamlines workflows.

Cost-Effectiveness: Affordable pricing models cater to various budgets, with options like pay-as-you-go.



Benefits For Businesses

Know about face attendance



Data-Driven Insights



Enhanced Security

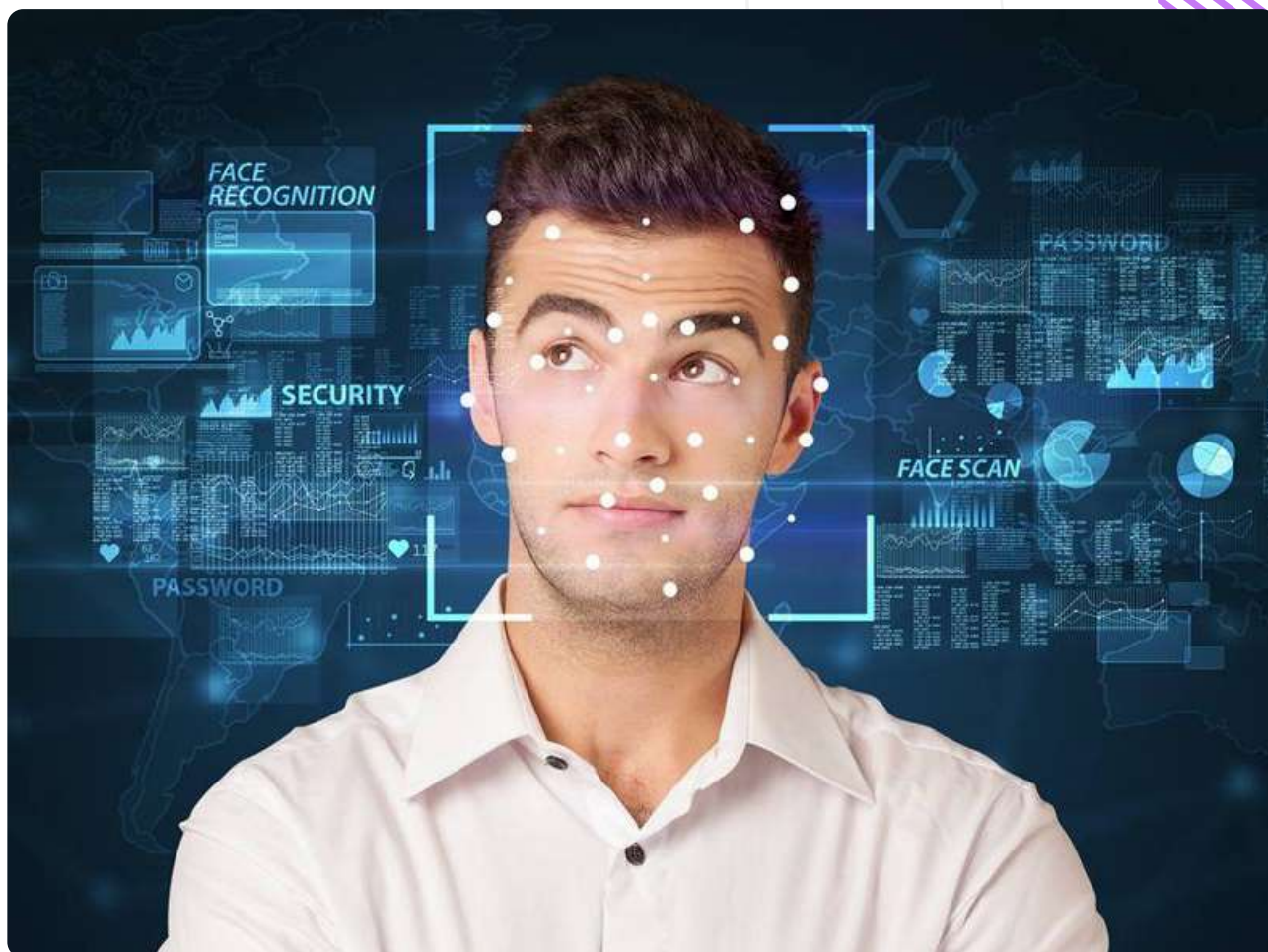
Data-Driven Insights: Real-time data and customizable reports empower businesses to track trends, improve workforce management, and make data-driven decisions.

Enhanced Security: The system prioritizes data protection with features like secure cloud storage, robust encryption, and compliance with relevant regulations. User access is controlled through role-based permissions and multi-factor authentication.



Security And Privacy Considerations

Know about face attendance



This artificial intelligence emphasizes user satisfaction and compliance with data protection laws and addresses potential privacy concerns, so you don't have to worry about the security of your information




Face the Future of Attendance

Now we want to check the advanced features and functions of this artificial intelligence

Advanced Features and Functionality:

 **Flexibility**

 **Accuracy And Reliability**

 **Centralized Management
And Monitoring**

 **Offline Functionality**

 **Advanced Analytics**

 **Mobile App Convenience**

Flexibility: The system recognizes faces with masks, allows for remote or selfie-based check-in/out, and functions in real-time. It integrates with existing IP cameras and handles various lighting conditions.

Accuracy and Reliability: High-accuracy facial recognition algorithms ensure dependable employee identification, even when multiple people are in a single frame.



Now we want to check the advanced features and functions of this artificial intelligence

Advanced Features and Functionality:

Centralized Management and Monitoring: A centralized console allows for configuring, monitoring, and receiving alerts about attendance irregularities.

Offline Functionality: Cached data enables offline access to employee profiles and attendance records.

Advanced Analytics: The system offers features like anomaly detection and demographic analysis for deeper workforce insights.

Mobile App Convenience: Employees can utilize mobile apps for easy check-in/out from any location.



Our Strengths

Familiar with our strengths



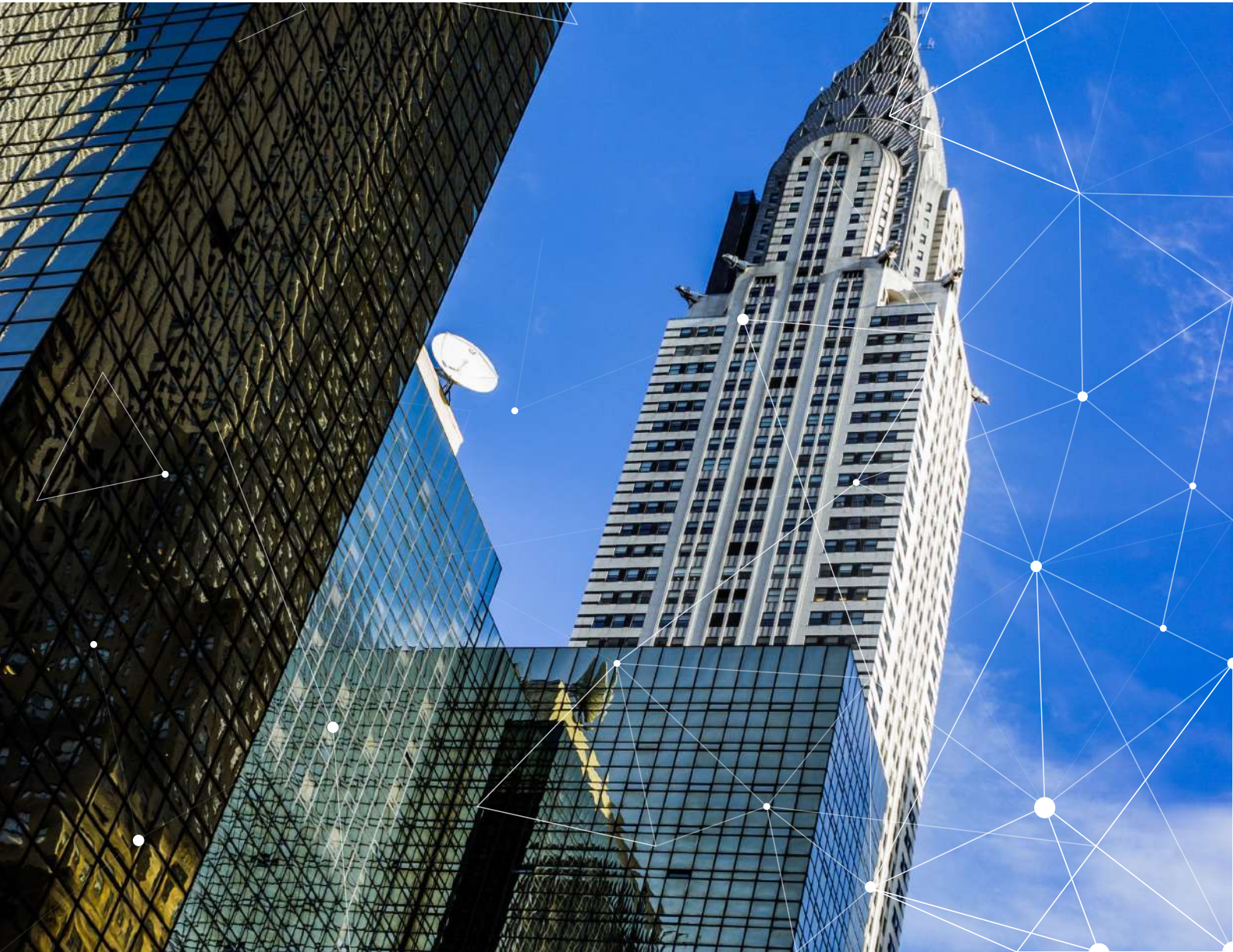
**Offline
Functionality**



**Accuracy and
Reliability**



**Advanced
Analytics**



Conclusion

Smart attendance



According to the said contents and careful examination, we come to the conclusion that this attendance and absence system using artificial intelligence with facial recognition offers a comprehensive solution that simplifies the attendance and absence processes of the company's people, reduces the administrative burden and Provides valuable data. By deciding on cost-effectiveness, acceptability and strong security, this system can succeed in any effort to manage the workforce and gain a powerful competitive advantage.



Contact Us

We'd love to hear from you



Company Mail

info@idom.co

Sales Mail

sales@idom.com

 www.idom.co

 info@idom.co

 [idom.ae](https://www.instagram.com/idom.ae)

